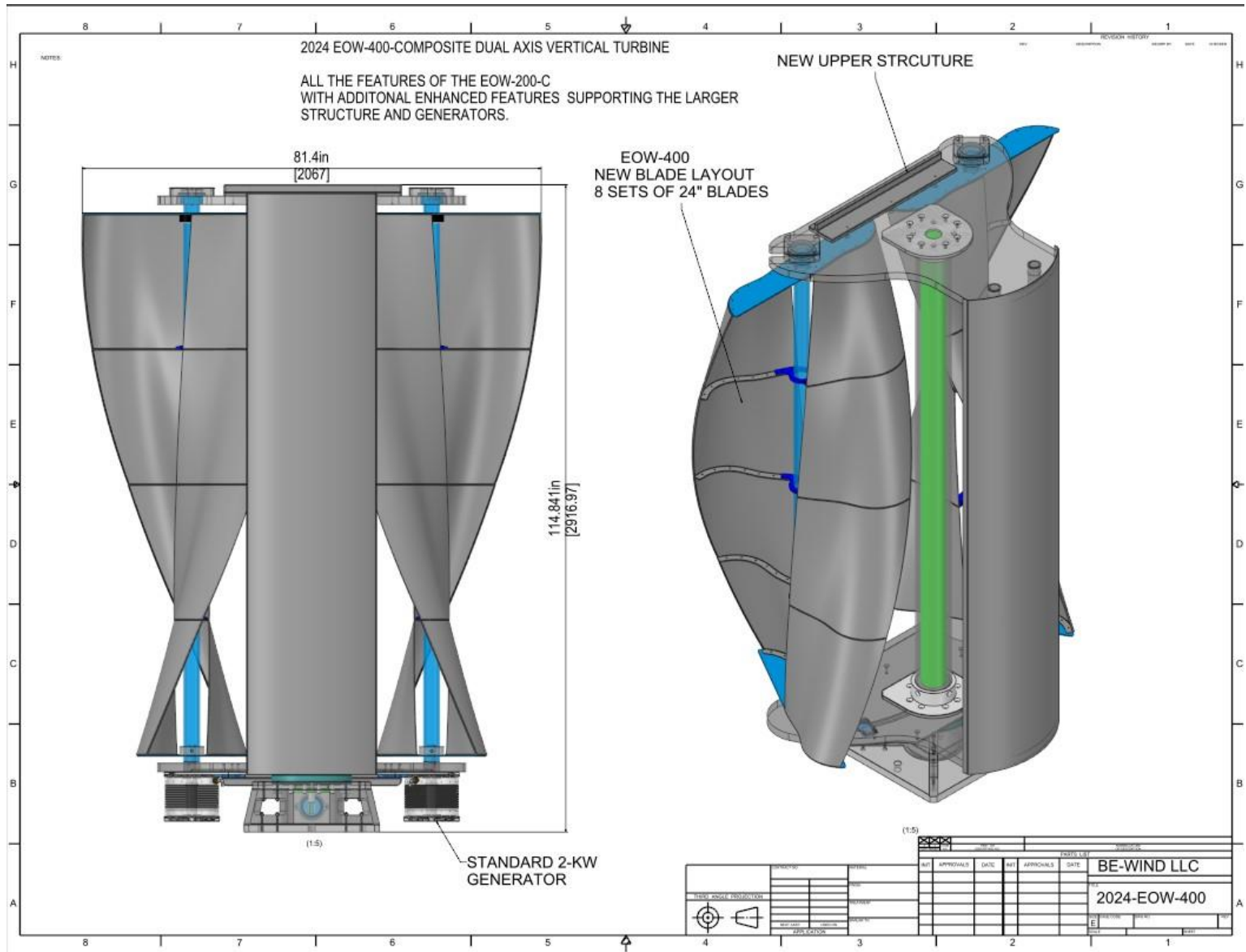
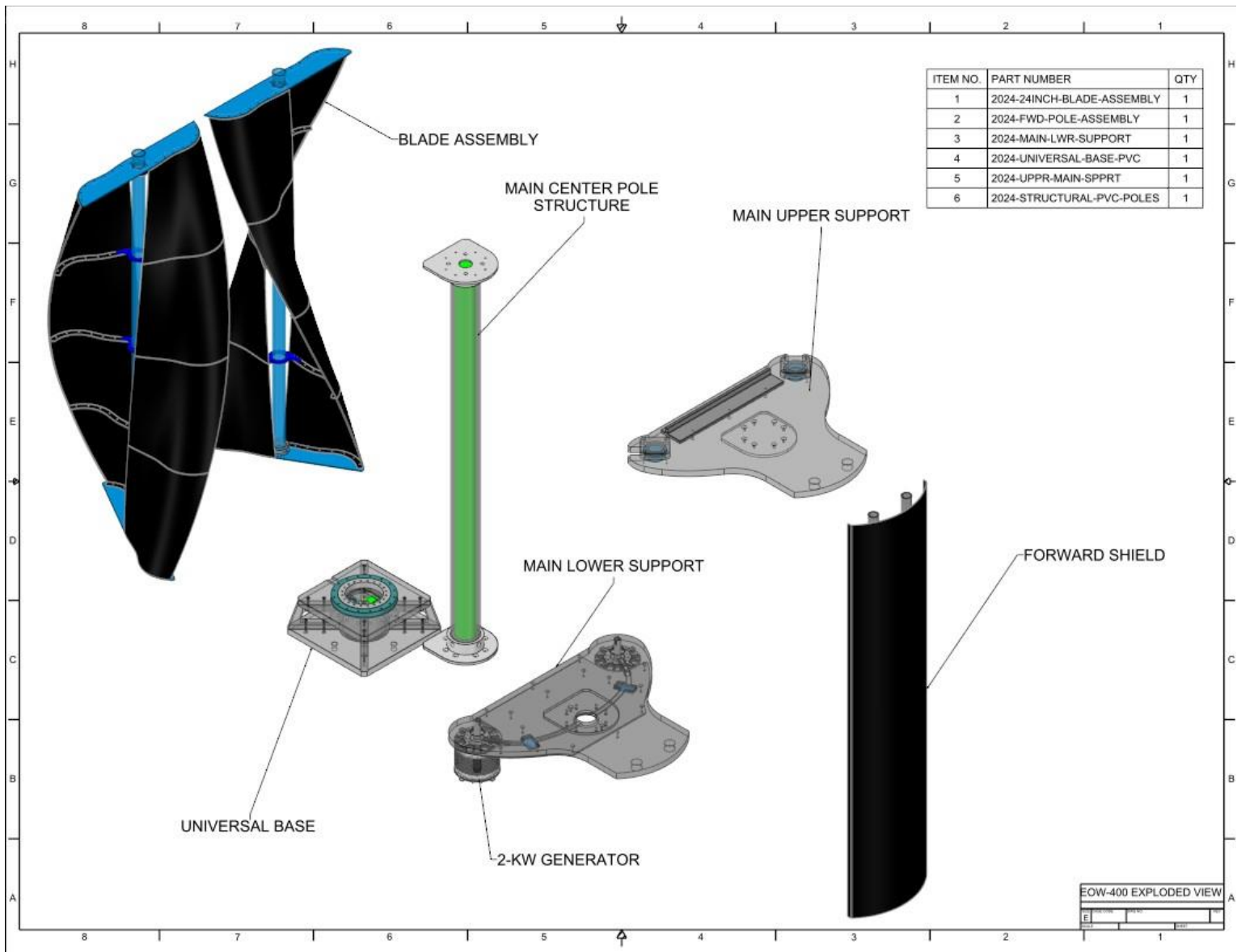


**BE-WIND EOW-400 COMPOSITE SERIES TURBINE.**

Revised 4/1/2024.  
Product name EOW-400

TECHNICAL ASPECTS.





The EOW-400 series turbine is the largest current design by BE-WIND. Manufactured with HDPE ST structural marine grade plastic for the main Base and Top structures, The mounting and slew bearing attachment known as the universal base assembly.

The blades and Front shield are composed of Resin transfer Carbon fiber material With inlay of E-glass for support.

The Center structural support assembly is manufactured from Aluminum lower and upper attachments, while the center structure is a filament wound composite 6.5" diameter to absorb the main loading.

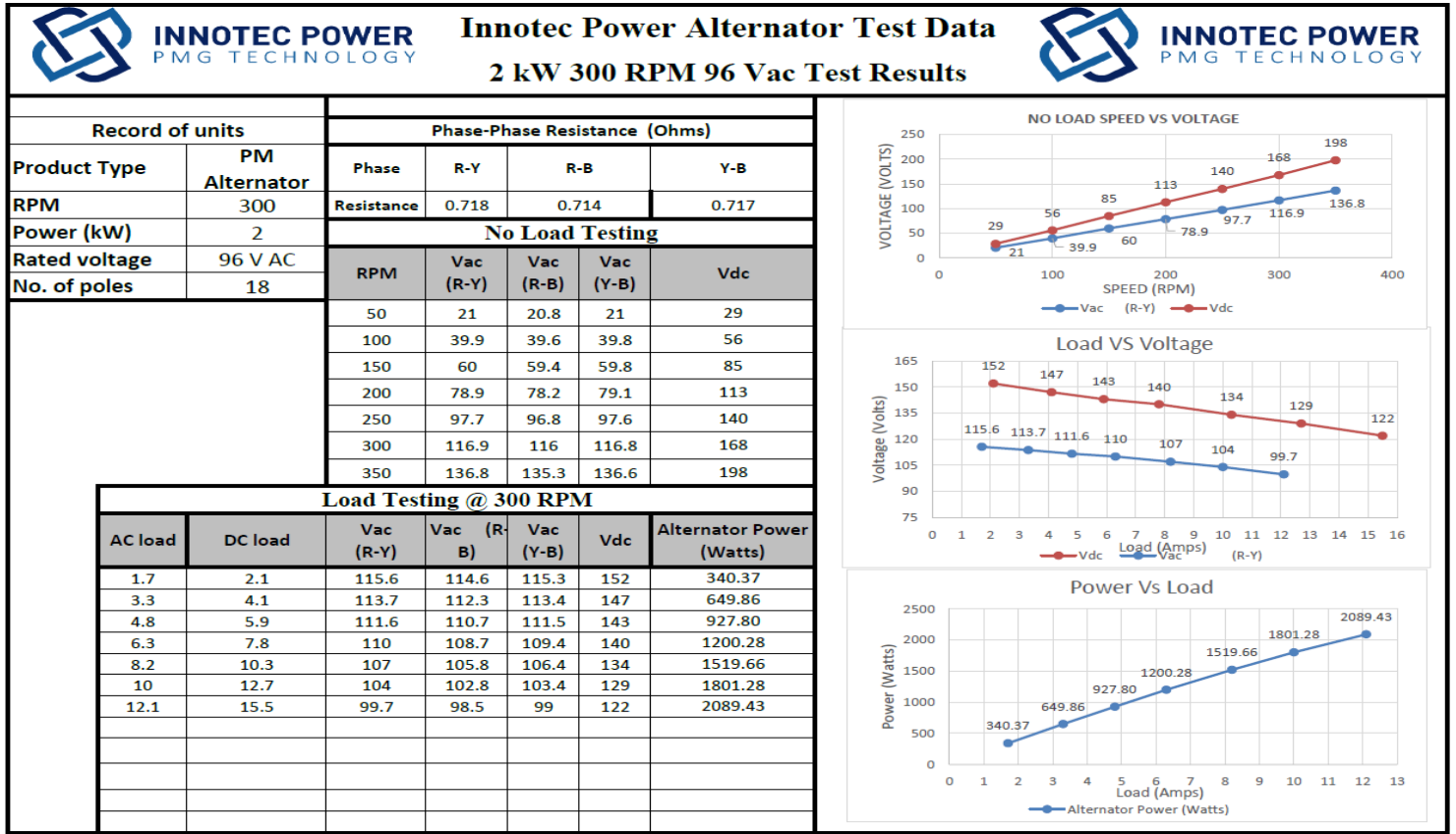
The EOW-400 was designed for Large Urban power requirements or small micro grid technology Based on all production of energy to be stored in a battery system. On grid application is available upon request But not recommended.

The system is also designed for areas of Max winds of 50 m/s , with built in RPM restriction of 400 RPM at 20 m/s

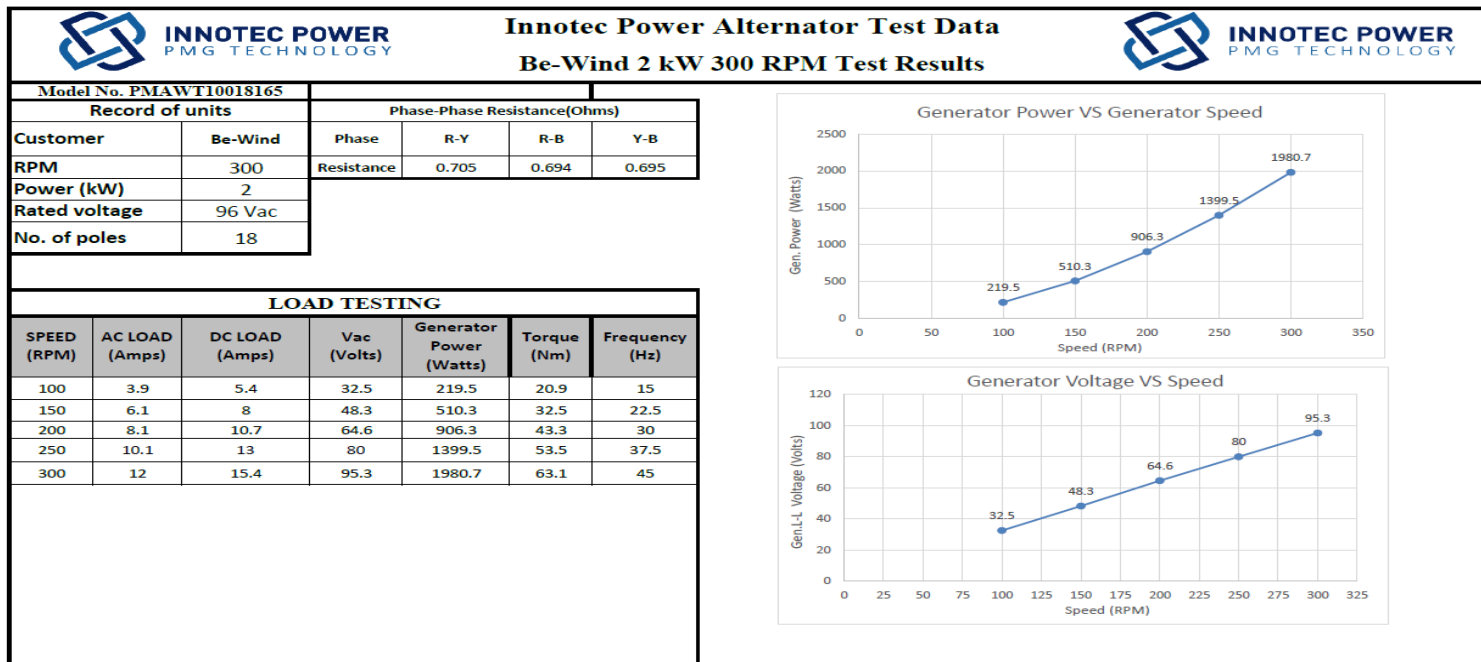
## Technical Data

<b>TYPE:</b>	<b>Dual Helical Savonius VWAT</b>
Swept Area:	1.0 Meters x 2
<b>Rotor Dimension:</b>	<b>1.0 m wide x 2.5m tall</b>
Overall Height:	2.9 Meters / 114"
<b>Weight:</b>	<b>295 Kg / 650 lbs.</b>
Rotor Material:	Carbon fiber / Composites / Aluminum
<b>Coatings:</b>	<b>None Required</b>
Start Up Speed:	1.5 m/s 3.5 Mph.
<b>Power Production Speed:</b>	<b>2.5 m/s 5.5 Mph. 48 volts 1 amps</b>
Survival Wind Speed:	45 m/s- 50 m/s 100 Mph -110 Mph
<b>Estimate at 16 m/s 3-phase AC:</b>	<b>3-phase 96 VAC @ 30 amps 2.0 Kw x 2</b>
Generators:	Radial Flux 3 phase VAC 2.0 Kw peak x 2
<b>Max Rotor Speed:</b>	<b>0-350 rpm</b>
Rated Voltage:	0-96 VAC
<b>Protection Class:</b>	<b>IP54</b>
Braking:	No Braking Required, (Except for Service: Electrical Brake)
<b>Grid Tie:</b>	<b>110-220 VAC, 50-60 Hz</b>
Battery Setup:	24-48-volt charging.
<b>Safety Compliance:</b>	<b>UL1741</b>
Design Life Span:	50 Years +
<b>Operating Temperature:</b>	<b>-20 Deg. C to 60 Deg. C</b>
Operating Pole Height:	3.5 meters (12 Ft.) 6.0 meters (20 Ft.)
<b>Warranty:</b>	<b>5 Years Standard 10 Year Service Contract.</b>

# Generator Specifications:



# Wind Power curve Data:



**Product Image:**

